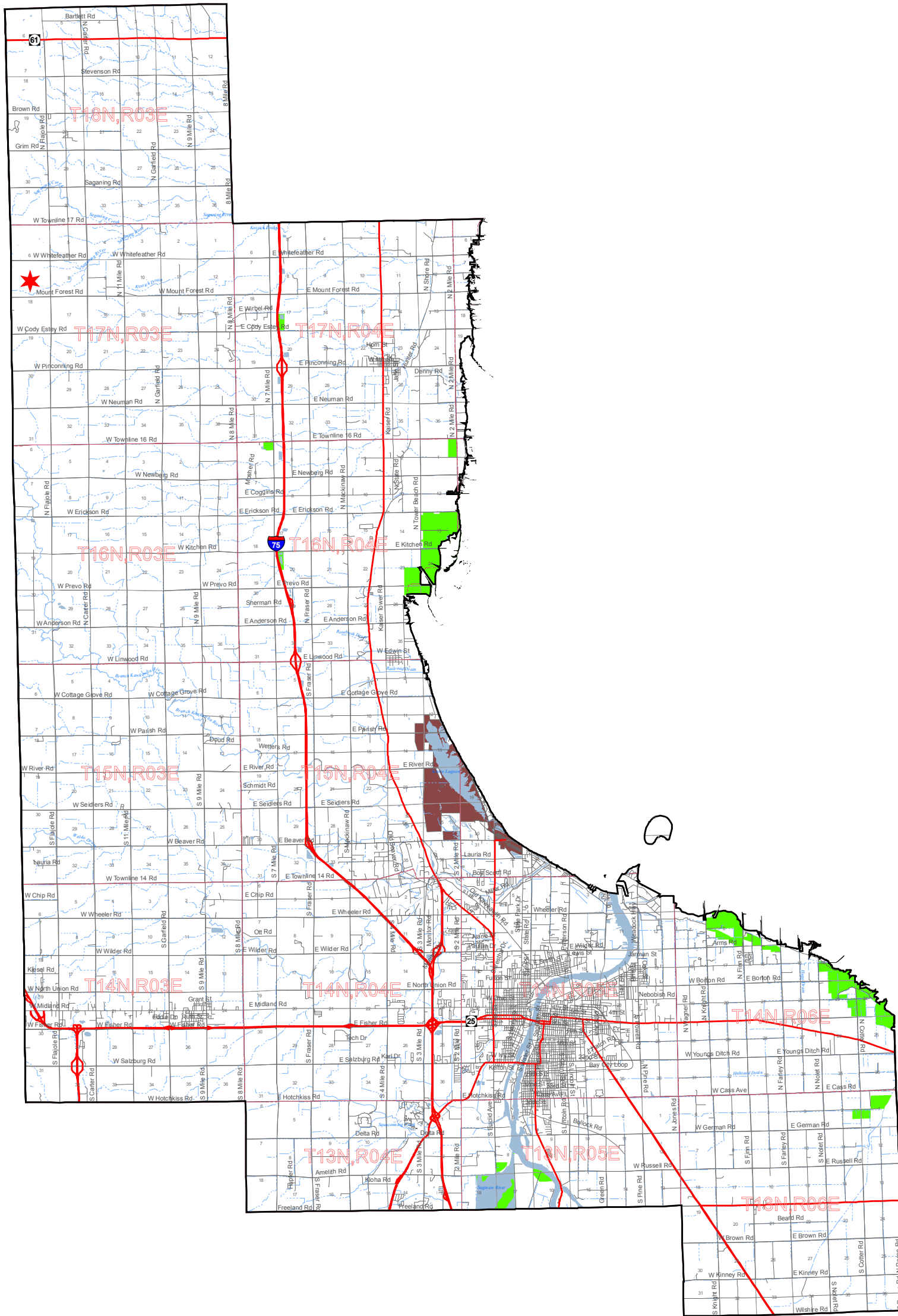
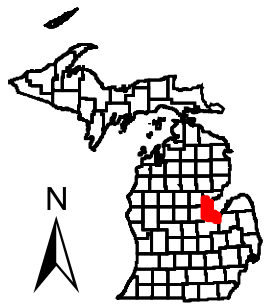




Department of  
NATURAL RESOURCES  
and ENVIRONMENT

# Lands Open to Public Hunting Bay County



Map Revised: May 13, 2010

## Legend

- Highway
- Roads
- Intermittent Stream/Drain
- Stream
- Lakes and Rivers
- Townships
- Other categories (Includes private lands, other - owner lands, lands closed to hunting, easements, etc.)

## Open to Public Hunting

- State Wildlife/Game Areas
- State Forest Land
- State Parks and Recreation Areas
- Commercial Forest Land
- National Forest
- National Lakeshore Boundary
- National Park Service
- US Fish and Wildlife Service
- Hunter Access Program (HAP)\*

## User Note:

It is the responsibility of the users of this map to be aware of all rules and regulations relevant to their hunting activities and hunting locations. This map shows approximate boundaries of lands open to public hunting. This map is designed to be used for hunting trip planning purposes only, and not for legal boundary determinations. There is the potential for small areas, which are closed to hunting, to be found within the shaded boundaries of areas which are shown as open to hunting. This map is not to be used as a sole source for determining if an area is open for all hunting seasons or for all game species. Contact your local DNR office if you have questions or to verify regulations relating to your activities before engaging in those activities. The DNR is on the internet at "www.michigan.gov/dnr".

\* See 2009-2010 Hunter Access Program Guide  
www.michigan.gov/dnr

